



The best kept secret



Company Profile:

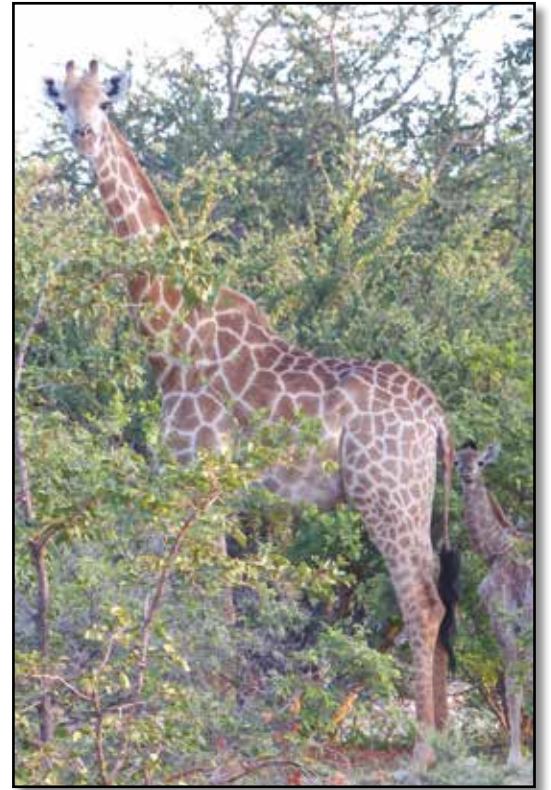
This enormous hunting district of approximately 45 000Ha lies in South Africa's northernmost corner, and here you can hunt in the magnificent, undisturbed bushveld, comprising of hilly terrain with many baobab trees (the giants of the bush), and more open areas dotted with acacia trees.

Limpopo Safaris has always been known for its great wealth of game, and high quality of its trophies. Medal winners are

often taken here, bow hunters are also welcome. This is as a result of the careful management of the game, and each year only a selected quota of animals are available for hunting.

A very high proportion of those visiting Limpopo Safaris are families and / or returning customers, this can be put down to the high level of service and accommodation, and the simple fact that people enjoy being here.







Accommodation:

Riverview offers luxurious accommodation at an outstanding location on the banks of the Njelele river. All rooms have an en-suite bathroom with shower and toilet, air conditioning, weapons safe, safety deposit box for your valuables, bar fridge and terrace. In front of the camp is a large dam, making it possible to take a trip on the boat, or simply try fishing. The camp also has a brand new swimming pool.

Lunch and dinner are normally served in the lapa, which are overlooking the river. There is also an indoor dining & sitting room.

The cuisine at Limpopo Safaris is a story in itself.

The camp offers Free Wifi, heated pool, daily laundry, boat trip & fishing tackle with bait at no extra cost.





Activities:

As you might expect, the main activities at Limpopo Safaris all revolve around animals and nature. If you visit Limpopo Safaris as a non-hunter, you are most welcome to join the hunter while hunting – at no extra cost.

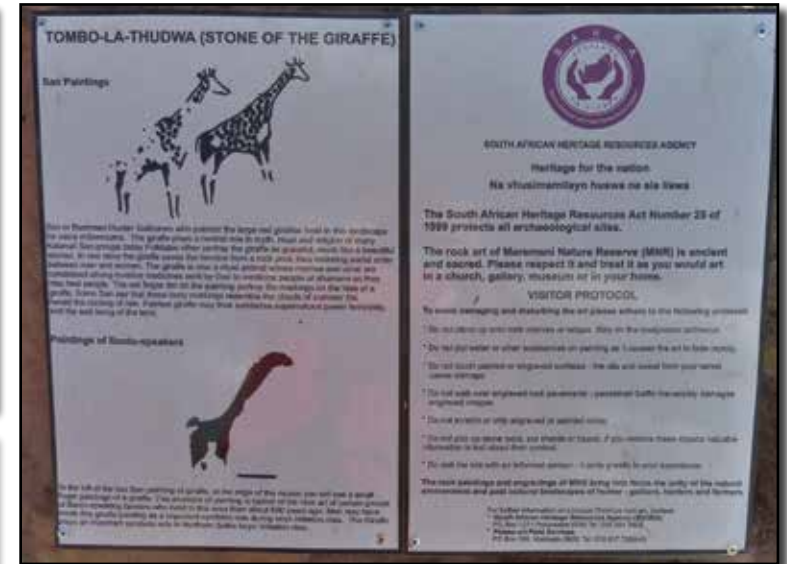
If you know in advance that you don't wish to join the hunt everyday, it is a good idea to book a nature guide, who can take you on a photo safari, walking safari, go fishing, see the cave paintings or visit the town of Musina, where you can feel the pulse of a small African town.

In addition to the many exciting game species here, the area is also a paradise for bird watchers. It is also possible just to sit back and relax, to enjoy your wonderful surroundings and make use of the lodge's facilities.

Limpopo Safaris lies in an area where it is easy to arrange single day or overnight excursions to surrounding attractions. Mashatu Game Reserve in Botswana is one such attraction; here you have an excellent chance of seeing lions, leopards and elephants in broad daylight. The Kruger National Park is also well worth a visit, and it is only a 90km drive away.

A day trip to the Kruger is easily arranged with prior notice.

Bush dinners are arranged at least once a week. Here you eat on the summit of one of the local hills while enjoying the sunset & view.





Fishing:

During most of the year the fishing in our dams is very good. Don't expect to catch giants, but you can catch many average sized fish that will serve well as an appetizer before dinner.

It is very relaxing to fish and see all the birds and animals coming to drink water, as well as crocodiles and many different lizards lying in the sun. This is a relaxing activity where you will also have the time to enjoy the contents of your coolerbox and snacks.

Bushwalks:

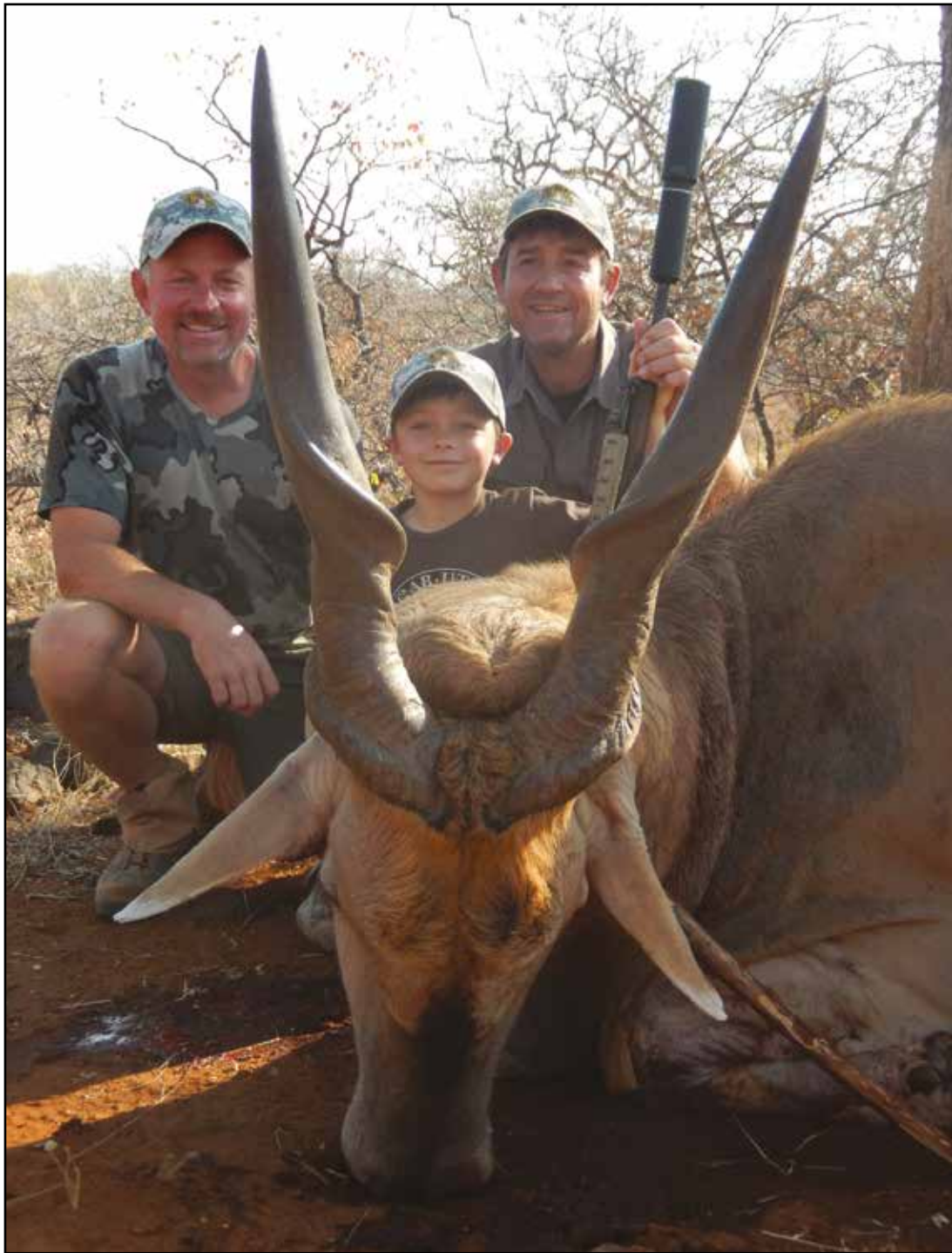
The most fantastic way to experience nature is by going on a bushwalk. During these excursions you will be guided by one of our armed Nature guides and you will not only spot many different species of game on foot, but you also get in touch with the smaller and sometimes most beautiful bush plants and wild flowers.

Small animals, reptiles, birds and insects are also spotted. Our Nature guides have a vast knowledge of the different plant types, birds, insects and trees, which makes this one of the most unforgettable experiences.



Gallery













Selection Hunting:

Due to rapid increase of the female population in certain species - Impala, Wildebeest, Kudu, Waterbuck & Eland we have an annual quota available to hunt.

We have a yearly game survey done in late winter by helicopter to determine hunting quotas.

Exclusive hunting rifles - Blaser & Sauer available for rental.

All equipped with Zeiss scopes







The best kept secret

Address: Musina, Limpopo, South Africa

Email: office@limpoposafaris.com

Mias cell: +27 79 506 8936

Bella cell: +27 73 153 5471

Office: +27 15 534 2403